

How to: Watermark

- 1) File - New - Document
- 2) Type watermark as you want it to appear.

The watermark can also be a symbol or your logo



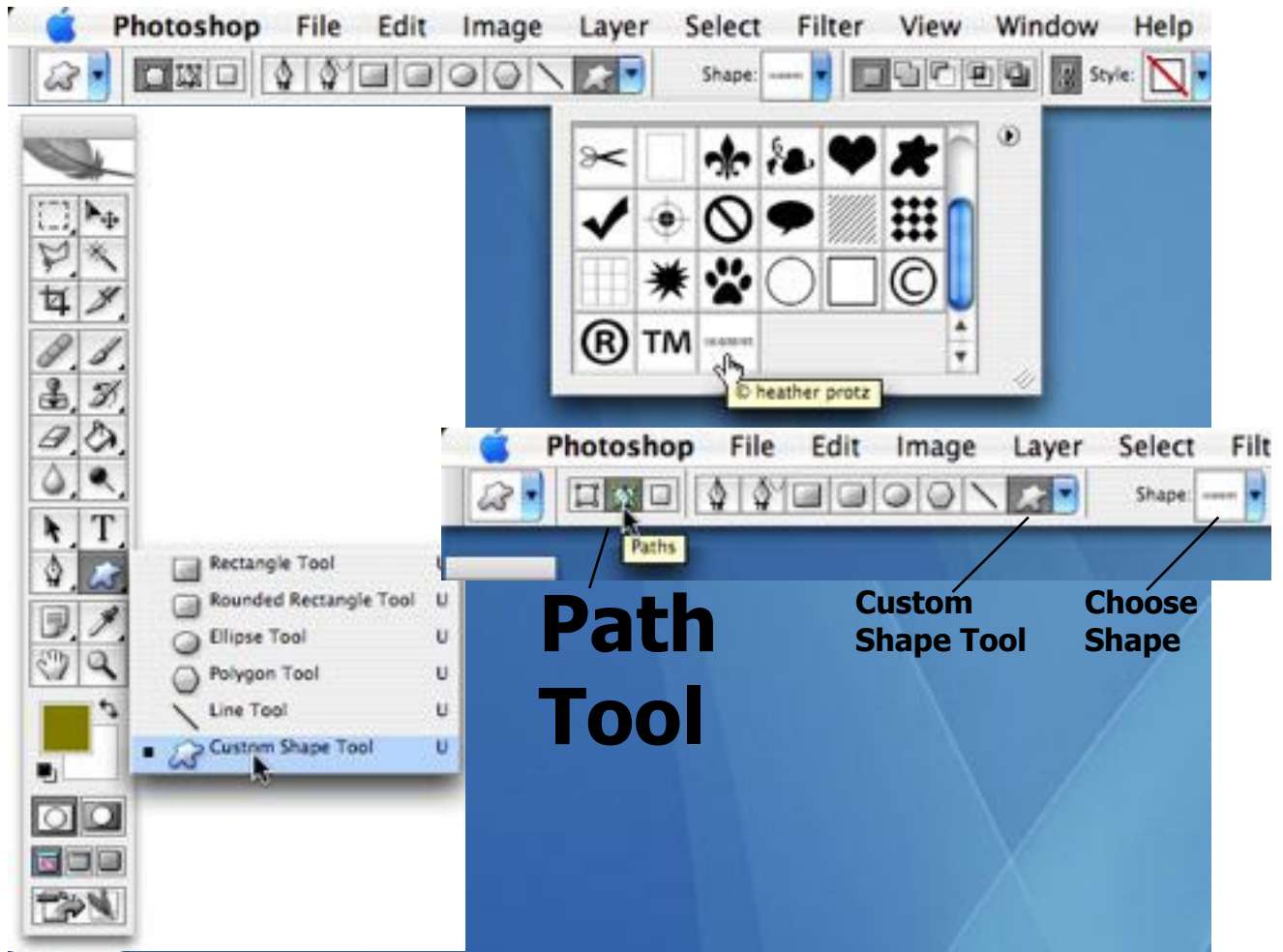
Make work path from selection

Make work path from selection

Load path as a selection

© 2006 HEATHER PROTZ

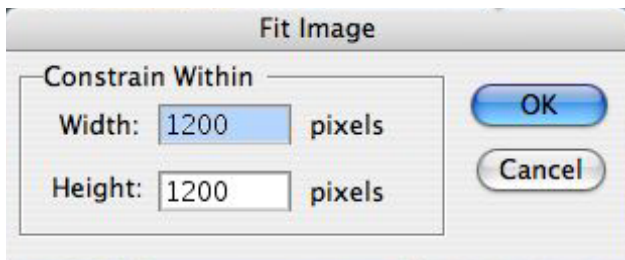
- 3) Command click on text icon in layers palette to bring up dancing ants (your selection)
- 4) Go to Paths Palette -Click make work path from selection
- 5) Go to Tool Palette - Select, Custom Tool Shape
- 6) go to menu Edit - Define Custom Shape
- 7) Select custom shape tool
-choose your new custom shape from the option bar at the top of the screen
- 8) Next click the path tool in the shape tool option bar
- 9) Test Shape tool:
Go to canvas -Draw out watermark shape



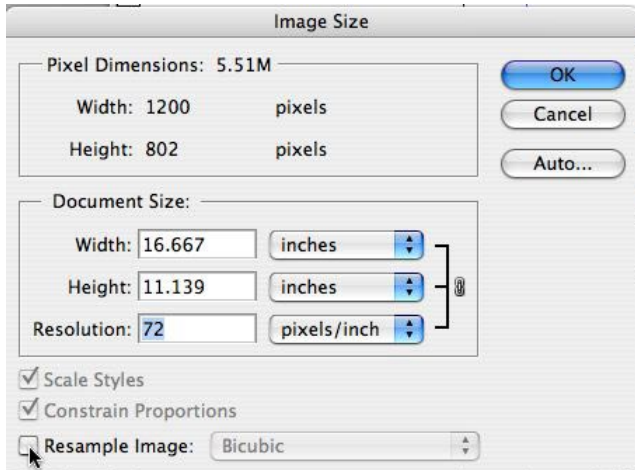
Path Tool

Custom Shape Tool

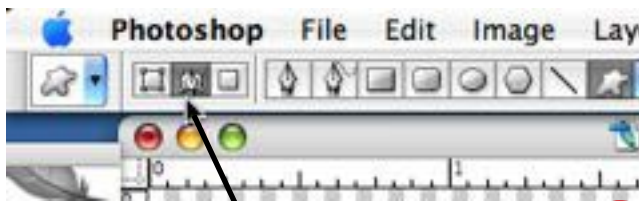
Choose Shape



2

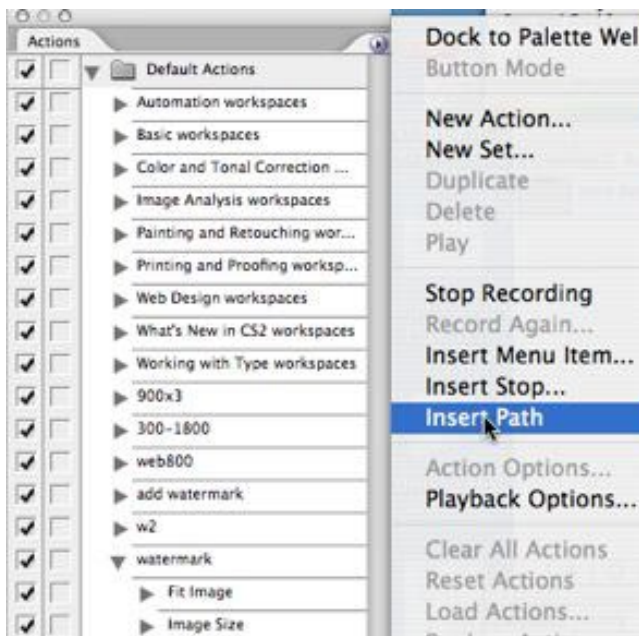


3



Options Bar: select the middle box of the first set

6



8

Open Image to Add Watermark

1) create new action
(title: watermark 1200)

2) set fit image size

go to menu File - Automate - Fit image
1200x1200

This can be any size you choose

3) set image size resolution (click off Resample Image)

go to menu image - image size 72pixels/inch

4) make new layer

5) **stop recording**

6) paste watermark in upper left corner

If you created a shape tool, you can drag your shape into the upper left corner of your image (in the options bar choose the middle box in the first set of boxes, Paths, before drawing shape)

to move the path we must go

go to menu Edit - Free transform path

why upper left corner? because it is constant between horizontals and verticals -click enter or return key to set

7) **start recording**

8) set work path

go to the actions palette

flyout menu: Insert Path

9) transform path if necessary

go to menu Edit - Free Transform path to scale, rotate, etc.

be sure to keep path within the image area click enter or return key to set

10) convert path to a selection

Go to path palette

command/control click on path, to change the path into a selection (dancing ants)

11) set foreground color

what color do you want?

12) fill selection

option - delete -mac

alt - delete -pc

13) deselect (command "d")

14) select all (command "a")

go to menu Layer - Align layers to selection - bottom edge

go to menu Layer - Align layers to selection - right edge

15) deselect (command "d")

16) select move tool ("v" on the keyboard)

go to menu Edit - free transform

to move watermark off edge of frame

16) add custom layer style

try bevel and emboss, play, explore

try: style

Blend options default -advanced blending -fill opacity -see what happens when you reduce opacity

17) flatten image

18) delete work path

19) stop recording