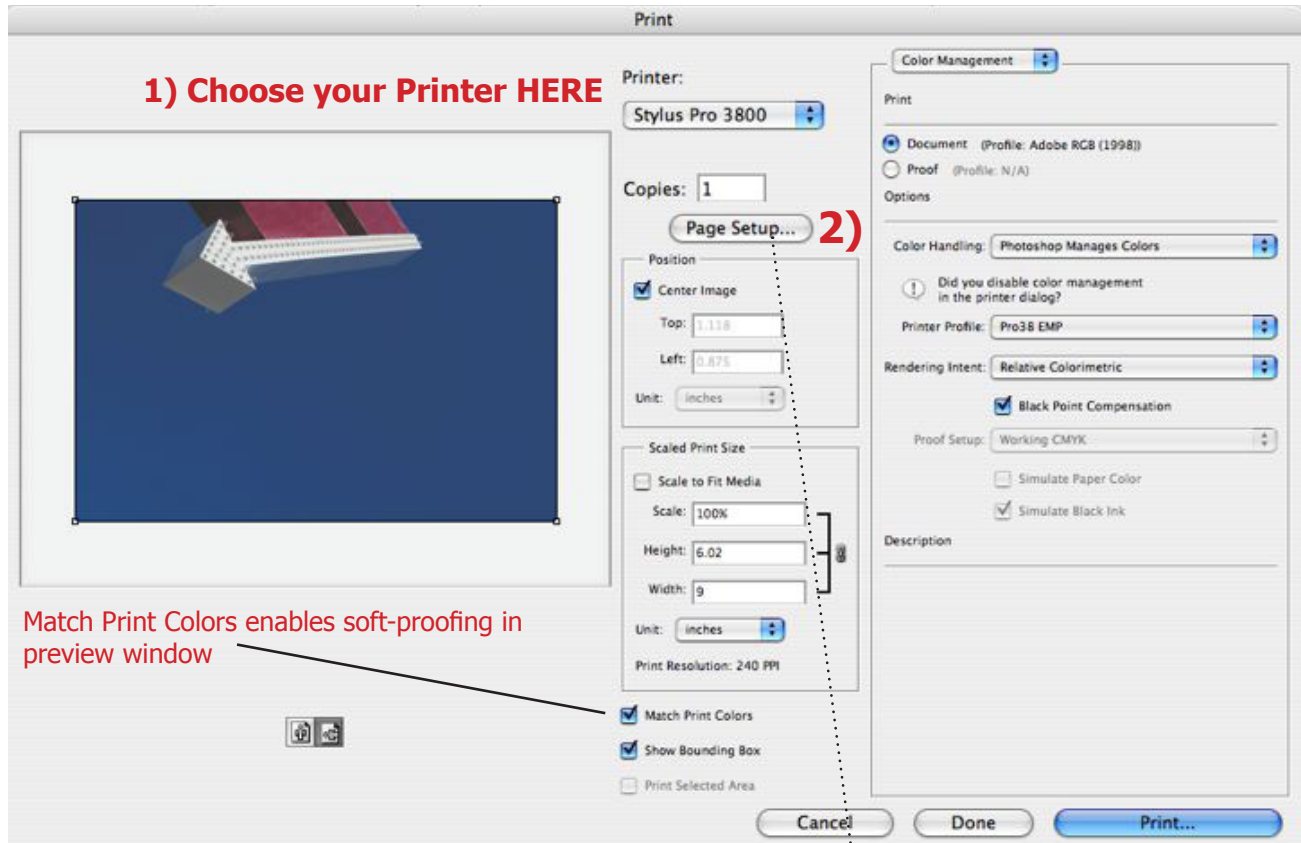


HOW TO: Print in Photoshop CS3

-Ideal Document Resolution for Epson Inkjet Printers is 240ppi

MK profiles are for use with matte papers and the **PK** profiles are for glossy, luster, semi-gloss papers.

For an in depth explanation of all boxes look @ http://www.computer-darkroom.com/ps10_print/ps10_print_1.htm



File--Print

2) First screen go to **Page Setup**

format for (your printer)

Epson 2400

Epson 2200

Epson 3800

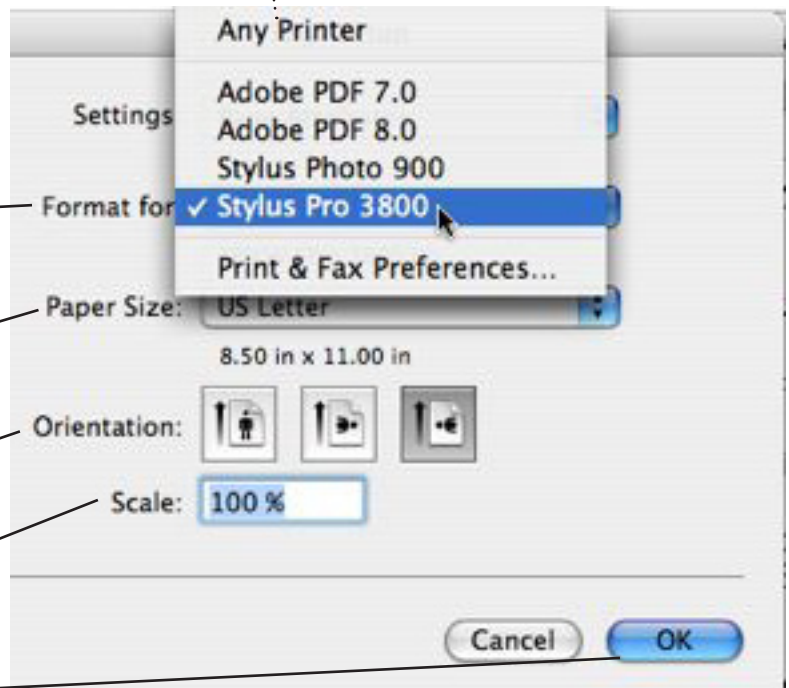
Epson 4000 etc.

Paper size (letter)

Orientation

Horizontal or vertical?

scale (I leave this at 100%)



3) **Click OK**

Main Screen

1 Choose your Printer HERE

Epson 2400, Epson 2200, Epson 3800, Epson 4000 etc.

2 This is the preview of your image
you can see how the image fits on the page

3 Scaled to Fit Media
(when making contact sheets
I check scale to fit media)
otherwise I scale things in Photoshop.

4 Color Management

5 Document should be Adobe RGB 1998

6 Options

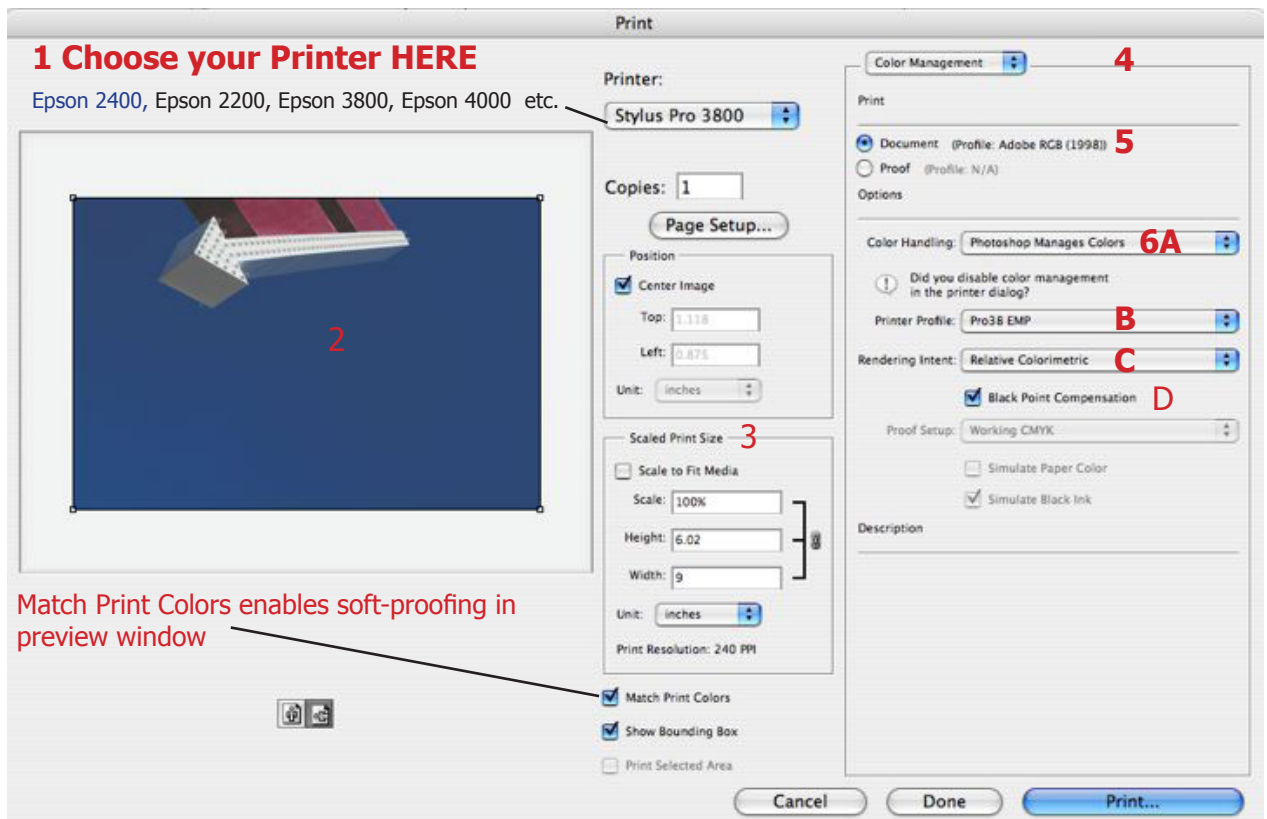
A Color Handling: Set to: Photoshop Manages Color

B Printer Profile: Choose your Epson Paper Type

C Rendering Intent: Relative Colorimetric

D Check Black Point Compensation

The description area at the bottom of this dialog reminds you that
Photoshop will perform the conversion for your printer.



Click Print

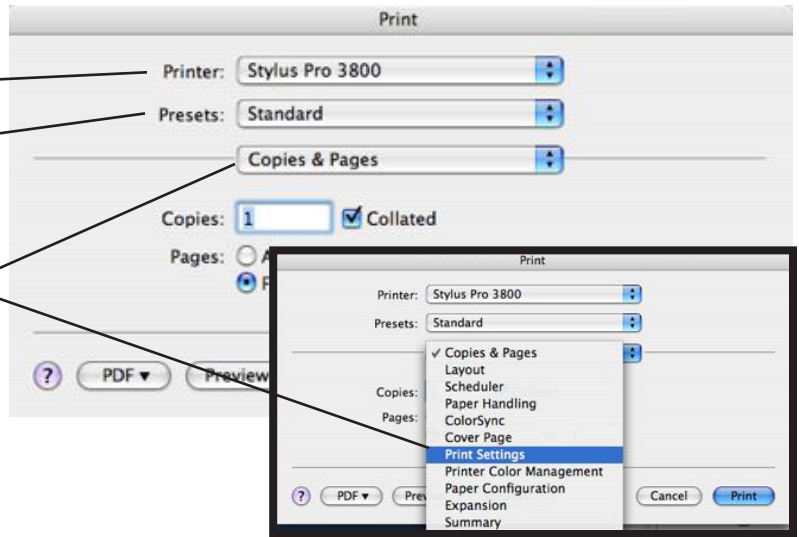
What another dialogue box?

1

Choose your printer

Presets leave to standard

Where it says **Copies and Pages** you have choices to make: **Choose Print Settings** first



Choose your media type

Ink: Color

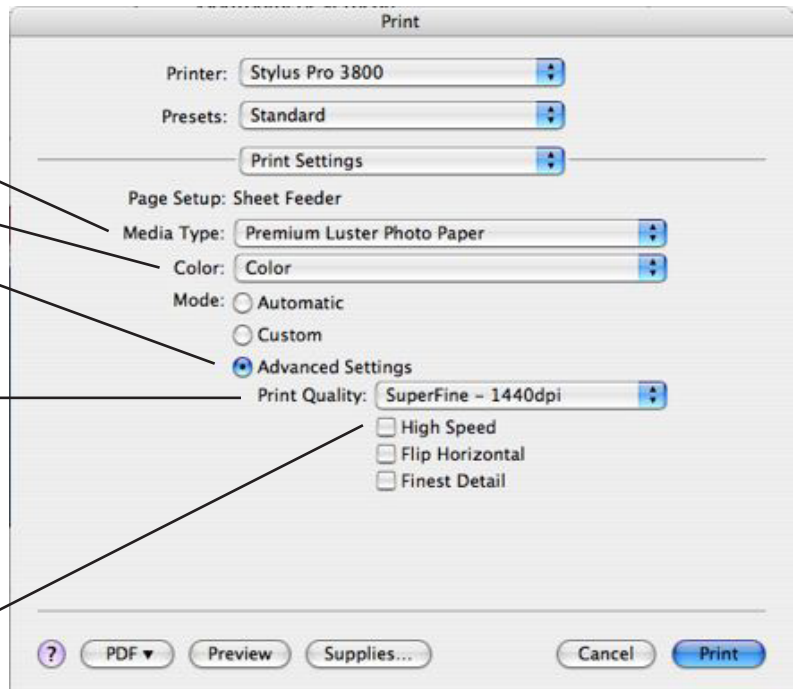
Mode: Check Advanced Settings

Print Quality Photo 1440 or 2880
(I use 1440, you cannot see a difference in the quality and the printer prints faster and uses less ink)

When printing with the Epson 2400 your options are Photo 1440x720 **Best Photo 1440x1440** Photo RPM 5760x1440

Leave High Speed checked off

2



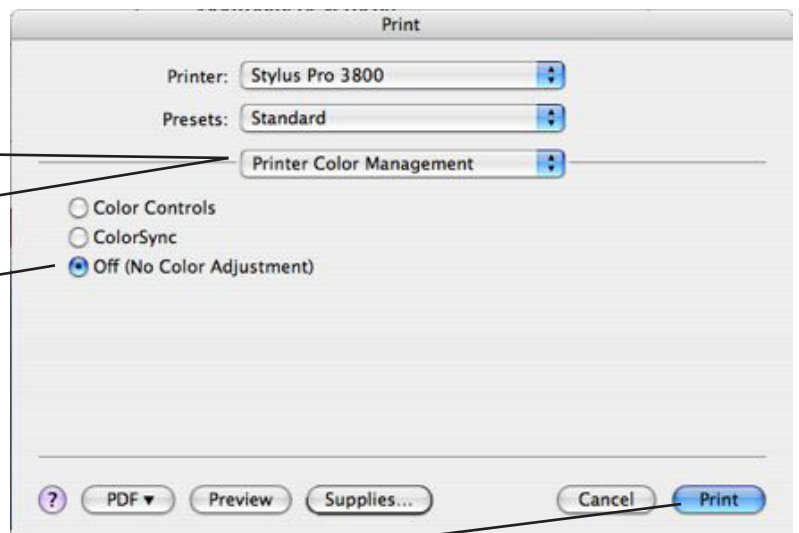
3

Next click the **print settings** box it will open to a variety of choices

-Choose Color Management

-Click No Color Adjustment

You have already set up color management in the Photoshop dialogue box by selecting a color space and a paper profile. You don't want the Epson driver to do it also -you will be double profiling.



CLICK PRINT